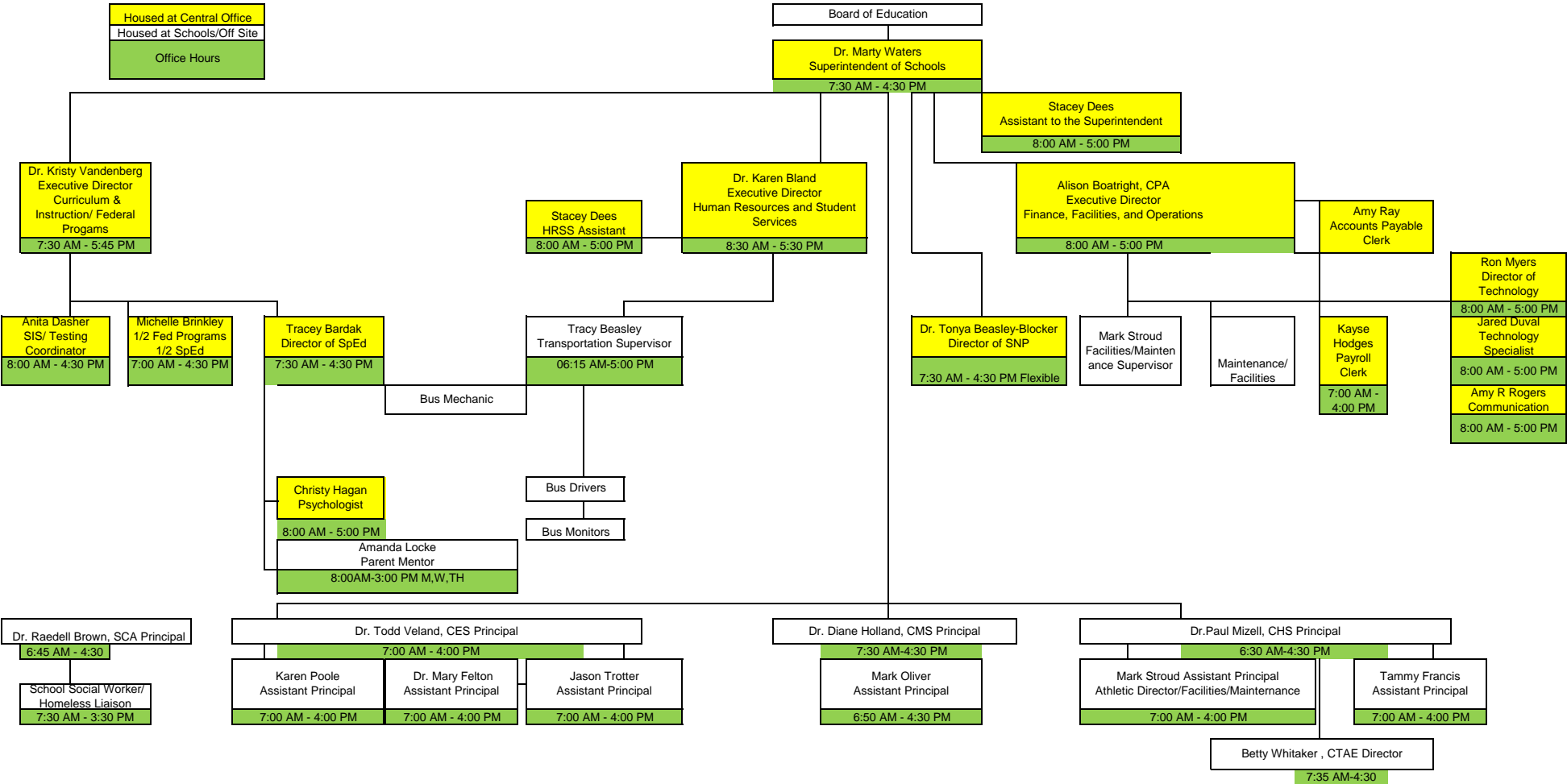


**Organizational Chart
EVANS COUNTY SCHOOLS**



Housed at Central Office
Housed at Schools/Off Site
Office Hours

Board of Education
Dr. Marty Waters
Superintendent of Schools
7:30 AM - 4:30 PM

Stacey Dees
Assistant to the Superintendent
8:00 AM - 5:00 PM

Dr. Kristy Vandenberg
Executive Director
Curriculum & Instruction/ Federal Programs
7:30 AM - 5:45 PM

Dr. Karen Bland
Executive Director
Human Resources and Student Services
8:30 AM - 5:30 PM

Alison Boatright, CPA
Executive Director
Finance, Facilities, and Operations
8:00 AM - 5:00 PM

Amy Ray
Accounts Payable Clerk

Anita Dasher
SIS/ Testing Coordinator
8:00 AM - 4:30 PM

Michelle Brinkley
1/2 Fed Programs
1/2 SpEd
7:00 AM - 4:30 PM

Tracey Bardak
Director of SpEd
7:30 AM - 4:30 PM

Stacey Dees
HRSS Assistant
8:00 AM - 5:00 PM

Tracy Beasley
Transportation Supervisor
06:15 AM-5:00 PM

Dr. Tonya Beasley-Blocker
Director of SNP
7:30 AM - 4:30 PM Flexible

Mark Stroud
Facilities/Maintenance Supervisor

Maintenance/
Facilities

Kayse Hodges
Payroll Clerk
7:00 AM - 4:00 PM

Ron Myers
Director of Technology
8:00 AM - 5:00 PM

Jared Duval
Technology Specialist
8:00 AM - 5:00 PM

Amy R Rogers
Communication
8:00 AM - 5:00 PM

Bus Mechanic

Bus Drivers

Bus Monitors

Christy Hagan
Psychologist
8:00 AM - 5:00 PM

Amanda Locke
Parent Mentor
8:00AM-3:00 PM M,W,TH

Dr. Raedell Brown, SCA Principal
6:45 AM - 4:30

Dr. Todd Veland, CES Principal
7:00 AM - 4:00 PM

Dr. Diane Holland, CMS Principal
7:30 AM-4:30 PM

Dr. Paul Mizell, CHS Principal
6:30 AM-4:30 PM

School Social Worker/
Homeless Liaison
7:30 AM - 3:30 PM

Karen Poole
Assistant Principal
7:00 AM - 4:00 PM

Dr. Mary Felton
Assistant Principal
7:00 AM - 4:00 PM

Jason Trotter
Assistant Principal
7:00 AM - 4:00 PM

Mark Oliver
Assistant Principal
6:50 AM - 4:30 PM

Mark Stroud Assistant Principal
Athletic Director/Facilities/Maintenance
7:00 AM - 4:00 PM

Tammy Francis
Assistant Principal
7:00 AM - 4:00 PM

Betty Whitaker, CTAE Director
7:35 AM-4:30

